



ulster™  
[www.ulstercarpets.com](http://www.ulstercarpets.com)

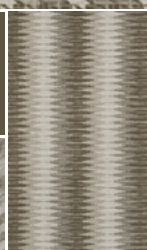
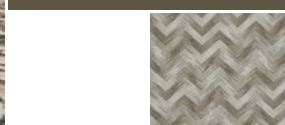
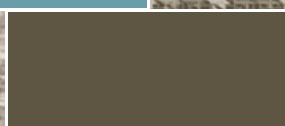
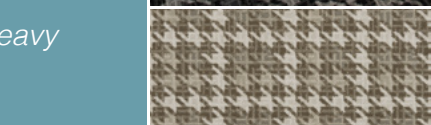
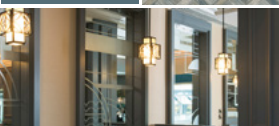
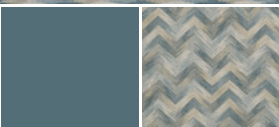
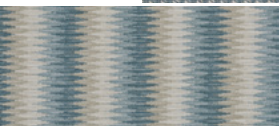
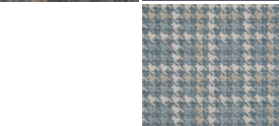
# FUSION

*Available in 4m widths*

*80% wool / 20% nylon*

*Heavy Contract / Extra Heavy*

*Domestic Wear*



# FUSION

*'Fusion' is a unique stock contract range with striking patterns and colour ways, designed to make a impact.*

*As the name suggests, the inspiration for this range is a fusion of re-discovered classic designs that have a resonance in many different areas of interior design. The chevron 'Reverb' has roots in architecture, parquet flooring and embroidery, the dogtooth design 'Tone' originates from tweed fabrics and is a staple of both furnishings and haute couture, while 'Sonic' echoes ikat textiles and slub yarn designs.*

*The Fusion designs maintain their familiarity but have been re-visited to have a completely modern feel with blues, greys and neutrals that are perfect for current colouring, whilst the scale of the bold designs are tempered by the use of texture which accentuates the softness and practicality of the axminster pile.*

*Available in a 4m width, this range is perfect for commercial interiors which endeavour to make a statement without the expense and lead times of a bespoke product. In a hardwearing combination of 80% wool and 20% nylon, Fusion is designed to withstand the heavy wear of a busy commercial environment.*



# Tone

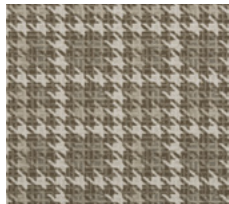
*Available in 4m Widths*

*80% Wool / 20% Nylon*

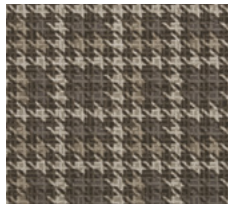
*Suitable for Heavy Contract / Extra  
Domestic Wear*



11/20086 Tone Marquee



91/20086 Tone Alloy



92/20086 Tone Tungsten



31/20086 Tone Electric



32/20086 Tone Denim



# *Sonic*

*Available in 4m Widths*

*80% Wool / 20% Nylon*

*Suitable for Heavy Contract / Extra  
Domestic Wear*



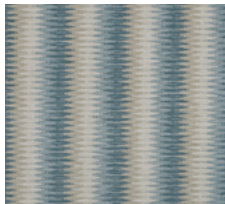
11/20087 Sonic Marquee



91/20087 Sonic Alloy



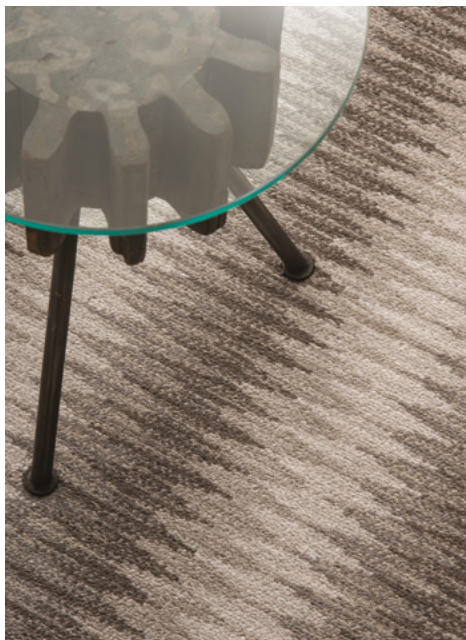
92/20087 Sonic Tungsten



31/20087 Sonic Electric



32/20087 Sonic Denim



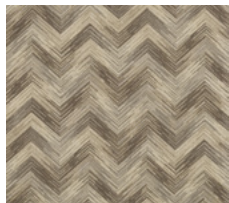


# Reverb

*Available in 4m Widths*

*80% Wool / 20% Nylon*

*Suitable for Heavy Contract / Extra  
Domestic Wear*



11/20088 Reverb Marquee



91/20088 Reverb Alloy



92/20088 Reverb Tungsten



31/20088 Reverb Electric



32/20088 Reverb Denim

# FUSION



Available in 4m Widths

80% Wool (mothproofed) / 20% Nylon

Heavy Contract / Extra Heavy Domestic Wear

**ulster**<sup>™</sup>  
[www.ulstercarpets.com](http://www.ulstercarpets.com)

Repeat Length: Tone 44cm (17") Self Match

Sonic 76cm (30") Self Match

Reverb 102cm (40") Self Match

Total Pile Weight: 1207g/m<sup>2</sup> (36.50oz/yd<sup>2</sup>)

Total Pile Height: 7.14mm (0.28")

Pitch: 27.56 per dm (7 per inch)

Rows: 31-.50 per dm (8 per inch)